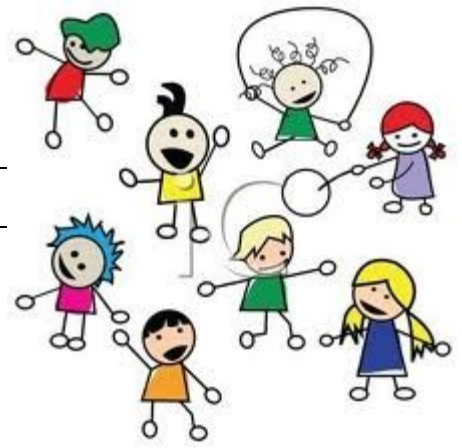


## Simplification de fractions



Simplifier les fractions suivantes

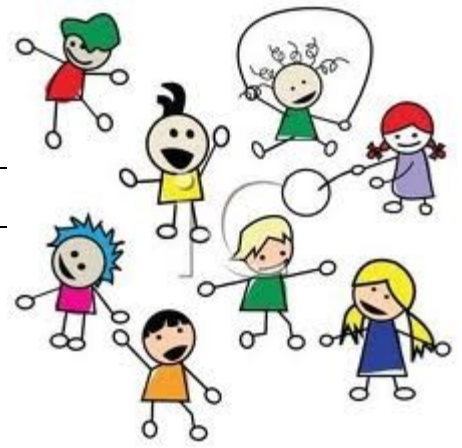
$$\frac{48}{36} = \frac{\boxed{\phantom{00}}}{\boxed{\phantom{00}}} \quad \text{donc} \quad \frac{48}{36} = \underline{\hspace{2cm}}$$

$$\frac{35}{50} = \frac{\boxed{\phantom{00}}}{\boxed{\phantom{00}}} \quad \text{donc} \quad \frac{35}{50} = \underline{\hspace{2cm}}$$

$$\frac{63}{72} = \frac{\boxed{\phantom{00}}}{\boxed{\phantom{00}}} \quad \text{donc} \quad \frac{63}{72} = \underline{\hspace{2cm}}$$

$$\frac{14}{35} = \frac{\boxed{\phantom{00}}}{\boxed{\phantom{00}}} \quad \text{donc} \quad \frac{14}{35} = \underline{\hspace{2cm}}$$

## Simplification de fractions



Simplifier les fractions suivantes

$$\frac{24}{56} = \frac{\boxed{\phantom{000}}}{\boxed{\phantom{000}}}$$

donc

$$\frac{24}{56} = \frac{\phantom{000}}{\phantom{000}}$$

$$\frac{12}{20} = \frac{\boxed{\phantom{000}}}{\boxed{\phantom{000}}}$$

donc

$$\frac{12}{20} = \frac{\phantom{000}}{\phantom{000}}$$

$$\frac{54}{48} = \frac{\boxed{\phantom{000}}}{\boxed{\phantom{000}}}$$

donc

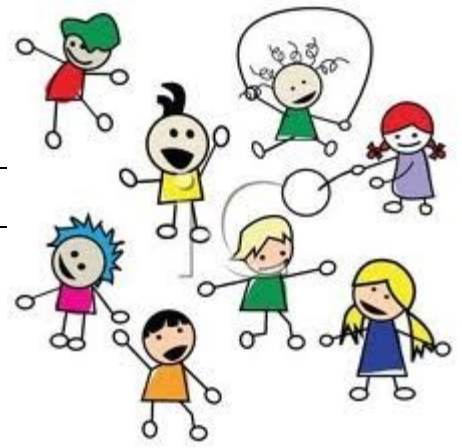
$$\frac{54}{48} = \frac{\phantom{000}}{\phantom{000}}$$

$$\frac{21}{27} = \frac{\boxed{\phantom{000}}}{\boxed{\phantom{000}}}$$

donc

$$\frac{21}{27} = \frac{\phantom{000}}{\phantom{000}}$$

## Simplification de fractions



Simplifier les fractions suivantes

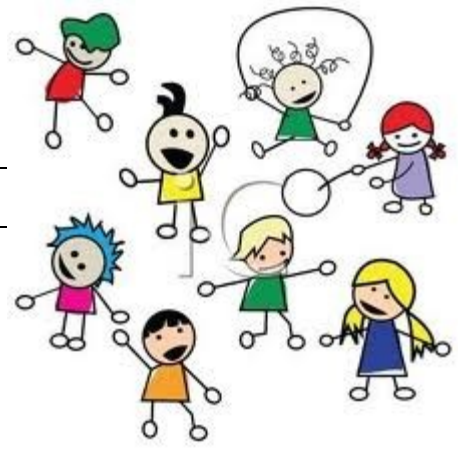
$$\frac{30}{21} = \frac{\boxed{\phantom{00}}}{\boxed{\phantom{00}}} \quad \text{donc} \quad \frac{30}{21} = \frac{\phantom{00}}{\phantom{00}}$$

$$\frac{16}{64} = \frac{\boxed{\phantom{00}}}{\boxed{\phantom{00}}} \quad \text{donc} \quad \frac{\phantom{00}}{\phantom{00}} = \frac{\phantom{00}}{\phantom{00}}$$

$$\frac{25}{45} = \frac{\boxed{\phantom{00}}}{\boxed{\phantom{00}}} \quad \text{donc} \quad \frac{25}{45} = \frac{\phantom{00}}{\phantom{00}}$$

$$\frac{8}{14} = \frac{\boxed{\phantom{00}}}{\boxed{\phantom{00}}} \quad \text{donc} \quad \frac{8}{14} = \frac{\phantom{00}}{\phantom{00}}$$

## Simplification de fractions



Simplifier les fractions suivantes

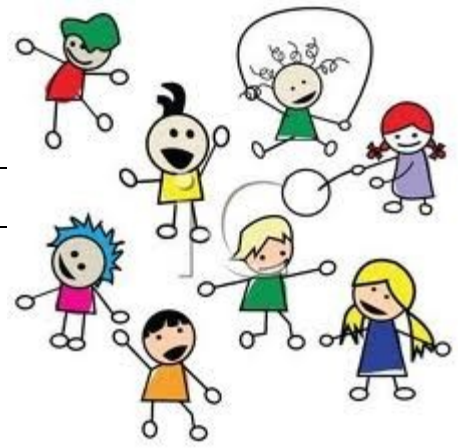
$$\frac{60}{54} = \frac{\boxed{\phantom{00}}}{\boxed{\phantom{00}}} \quad \text{donc} \quad \frac{\phantom{00}}{\phantom{00}} = \frac{\phantom{00}}{\phantom{00}}$$

$$\frac{16}{20} = \frac{\boxed{\phantom{00}}}{\boxed{\phantom{00}}} \quad \text{donc} \quad \frac{16}{20} = \frac{\phantom{00}}{\phantom{00}}$$

$$\frac{14}{56} = \frac{\boxed{\phantom{00}}}{\boxed{\phantom{00}}} \quad \text{donc} \quad \frac{14}{56} = \frac{\phantom{00}}{\phantom{00}}$$

$$\frac{27}{18} = \frac{\boxed{\phantom{00}}}{\boxed{\phantom{00}}} \quad \text{donc} \quad \frac{\phantom{00}}{\phantom{00}} = \frac{\phantom{00}}{\phantom{00}}$$

## Simplification de fractions



Simplifier les fractions suivantes

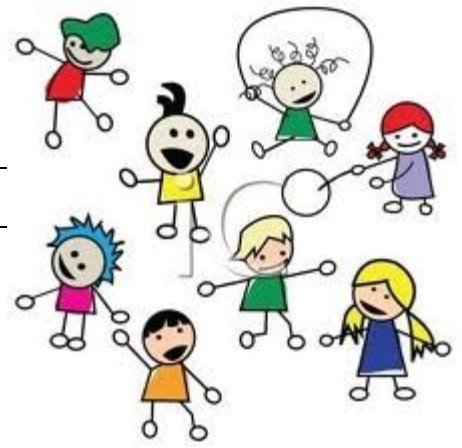
$$\frac{42}{48} = \frac{\quad}{\quad} \quad \text{donc} \quad \frac{\quad}{\quad} = \frac{\quad}{\quad}$$

$$\frac{9}{6} = \frac{\quad}{\quad} \quad \text{donc} \quad \frac{9}{6} = \frac{\quad}{\quad}$$

$$\frac{72}{27} = \frac{\quad}{\quad} \quad \text{donc} \quad \frac{\quad}{\quad} = \frac{\quad}{\quad}$$

$$\frac{20}{24} = \frac{\quad}{\quad} \quad \text{donc} \quad \frac{\quad}{\quad} = \frac{\quad}{\quad}$$

## Simplification de fractions



Simplifier les fractions suivantes

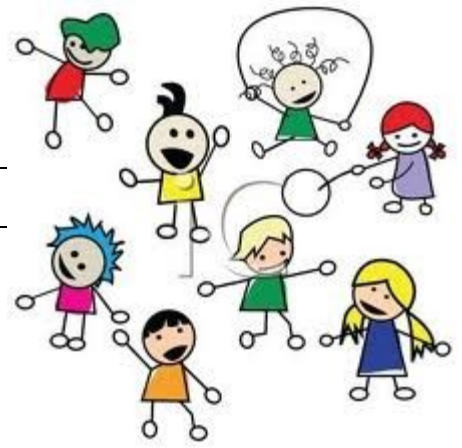
$$\frac{35}{50} = \frac{\quad}{\quad} \quad \text{donc} \quad \frac{\quad}{\quad} = \frac{\quad}{\quad}$$

$$\frac{40}{64} = \frac{\quad}{\quad} \quad \text{donc} \quad \frac{\quad}{\quad} = \frac{\quad}{\quad}$$

$$\frac{6}{16} = \frac{\quad}{\quad} \quad \text{donc} \quad \frac{\quad}{\quad} = \frac{\quad}{\quad}$$

$$\frac{63}{14} = \frac{\quad}{\quad} \quad \text{donc} \quad \frac{\quad}{\quad} = \frac{\quad}{\quad}$$

## Simplification de fractions



Simplifier les fractions suivantes

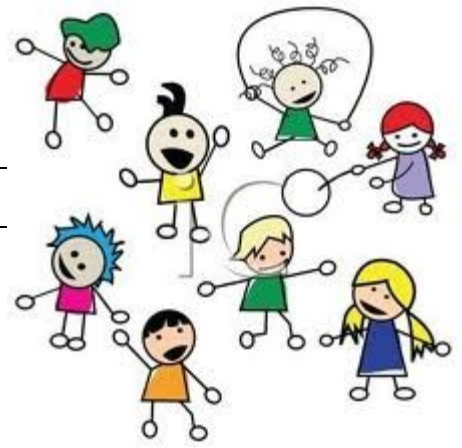
$$\frac{32}{48} = \frac{\square}{\square} \quad \text{donc} \quad \underline{\hspace{2cm}} = \underline{\hspace{2cm}}$$

$$\frac{10}{25} = \frac{\square}{\square} \quad \text{donc} \quad \underline{\hspace{2cm}} = \underline{\hspace{2cm}}$$

$$\frac{15}{21} = \frac{\square}{\square} \quad \text{donc} \quad \underline{\hspace{2cm}} = \underline{\hspace{2cm}}$$

$$\frac{49}{21} = \frac{\square}{\square} \quad \text{donc} \quad \underline{\hspace{2cm}} = \underline{\hspace{2cm}}$$

## Simplification de fractions



Simplifier les fractions suivantes

$$\frac{36}{40} = \frac{\quad}{\quad} \quad \text{donc} \quad \frac{\quad}{\quad} = \frac{\quad}{\quad}$$

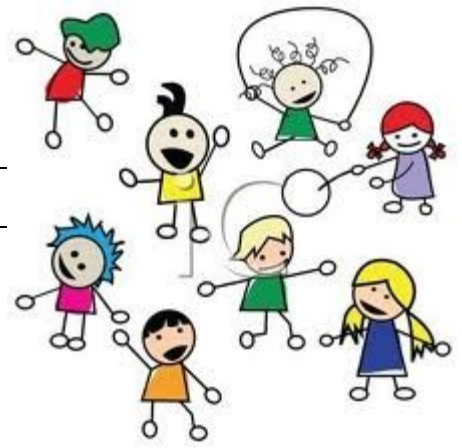
$$\frac{8}{4} = \frac{\quad}{\quad} \quad \text{donc} \quad \frac{\quad}{\quad} = \frac{\quad}{\quad}$$

$$\frac{9}{45} = \frac{\quad}{\quad} \quad \text{donc} \quad \frac{\quad}{\quad} = \frac{\quad}{\quad}$$

$$\frac{18}{36} = \frac{\quad}{\quad} \quad \text{donc} \quad \frac{\quad}{\quad} = \frac{\quad}{\quad}$$



## Simplification de fractions



Simplifier les fractions suivantes

$$\frac{7}{14} = \frac{\quad}{\quad} \quad \text{donc} \quad \frac{\quad}{\quad} = \frac{\quad}{\quad}$$

$$\frac{32}{56} = \frac{\quad}{\quad} \quad \text{donc} \quad \frac{\quad}{\quad} = \frac{\quad}{\quad}$$

$$\frac{81}{45} = \frac{\quad}{\quad} \quad \text{donc} \quad \frac{\quad}{\quad} = \frac{\quad}{\quad}$$

$$\frac{15}{18} = \frac{\quad}{\quad} \quad \text{donc} \quad \frac{\quad}{\quad} = \frac{\quad}{\quad}$$